

Colville Wellhead Protection

- EXPLANATION:**
- 1-YEAR TIME OF TRAVEL BOUNDARY
 - 5-YEAR TIME OF TRAVEL BOUNDARY
 - 10-YEAR TIME OF TRAVEL BOUNDARY
 - BUFFER ZONE
 - PW-1 ● CITY OF COLVILLE PRODUCTION WELL NUMBER AND APPROXIMATE LOCATION
 - AGRICULTURE
 - RANCHING
 - RESIDENTIAL AND UNDEVELOPED

WELL LOCATION NUMBERING SYSTEM

The well location numbers used in this report give the location of wells according to the official rectangular public-land survey. For example, in well number 35/39-12L01 the part preceding the hyphen indicates successively the township and range (T.35N., R.39E.) north and east of the Willamette base line and meridian, respectively. The first number following the hyphen indicates the Section (see. 12) and the letter (L) indicates the 40-acre subdivision of the Section as shown in the sketch below. The last number is a sequence number used to distinguish wells in the same 40-acre tract. Thus, well 35/39-12L01 is in the NE 1/4 of the SW 1/4 of sec. 12, T.35N., R.39E.

D	C	B	A	Sec. 12
E	F	G	H	
M	N	K	J	
N	P	Q	R	

Well 35/39-12L01

On plates 1, 4, and 5 which show numbered section, only the 40-acre subdivision, and sequence number are shown. Thus well 35/39-12L01 is shown as L01.

References:

USGS 7.5' topographic quadrangle maps:
Colville, Washington
White Mud Lake, Washington

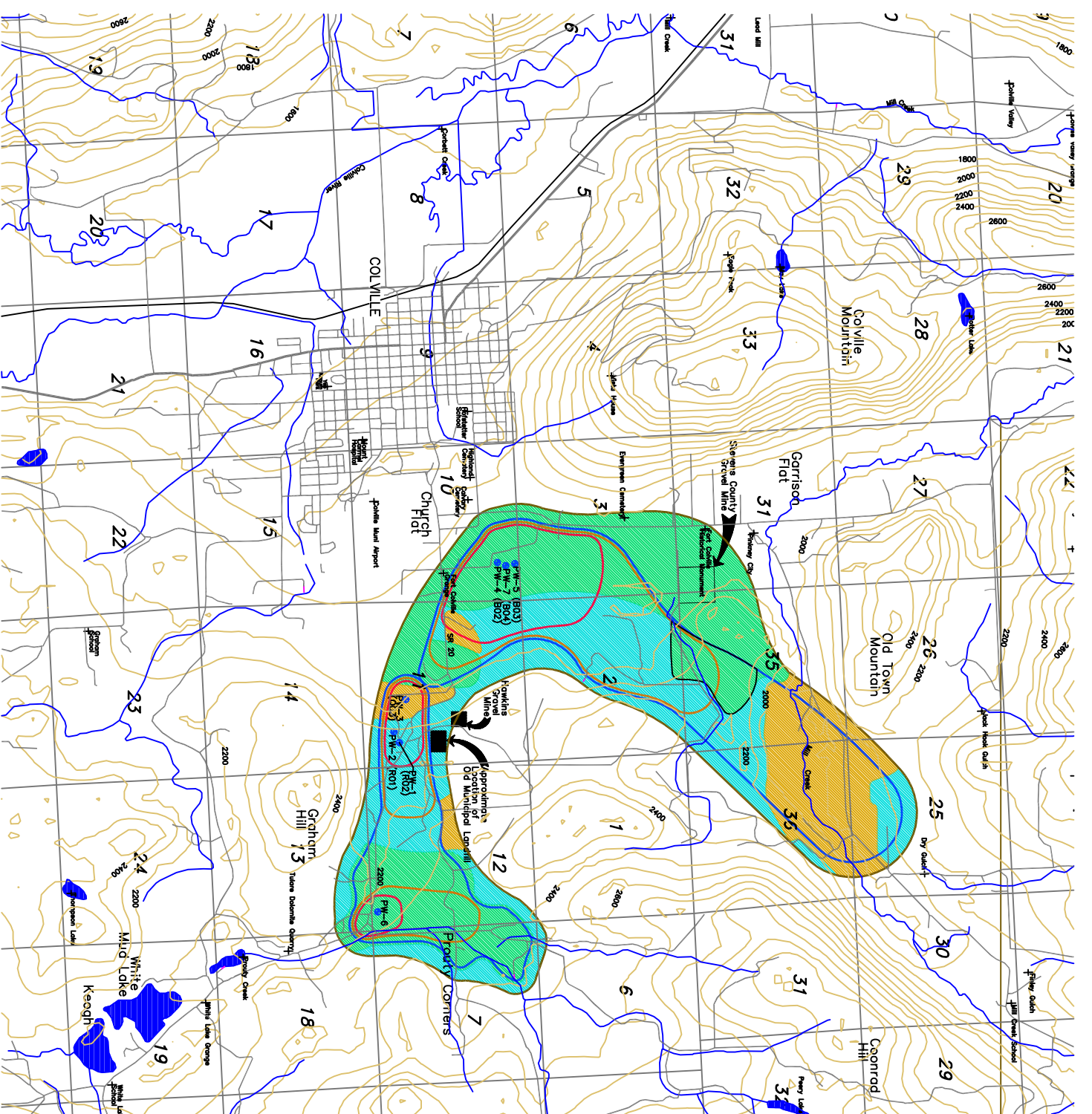


Figure 2.3